

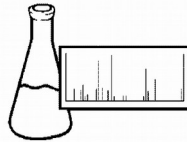
ENDYNE, INC.

56 ETNA ROAD

LEBANON, NH 03766-1446

Phone: 603-678-4891 Fax 603-678-4893

Email: arakotz@endynelabs.com



ENDYNE, INC.

Radon in Water

Report Sent To:

Name: Email: Address: Phone: Fax:

Cust: 89621



Proj: GEN



JT: RADON-R



CHAIN OF CUSTODY

Table with columns for Date and Time, containing fields for Relinquished by and Received by Endyne.

RESIDENTIAL CLIENTS: Fill out form completely.

Is the sample from a Potable drinking water source in Vermont? Check either YES: OR NO: (Required)

If YES, read the information provided on the back of this form before proceeding.

Please answer the following questions about your Potable water source:

Form with fields for Name of Sampler, Sampling Location, Sampling Address, Water source, and chlorination status.

PLEASE READ DETAILED INSTRUCTIONS ON REVERSE SIDE BEFORE SAMPLING

Table with columns: Sample Collection (Date, Time), Preservative, Type, Size, #, Parameters. Row 1: None, Glass, 40 ml Vial, 1, Radon in Water *** (NO HEADSPACE)

Special Instructions:

Samples must reach the lab the same day of collection and are accepted Monday through Thursday ONLY. Samples CANNOT be accepted on Fridays.

Please include payment with sample submission. We accept checks (payable to Endyne, Inc.), or call for credit card processing.

***This analysis is subcontracted. Endyne, Inc. reserves the right to subcontract analysis that we are not capable of analyzing within our facility.

Payment summary section with fields for Price: \$100.00, Shipping +\$20, and Payment.

Vermont Legislation, Act 163, enacted in 2013 requires that all testing of potable water, both public and residential, must be performed by a Vermont accredited laboratory, and that the laboratory submit ALL potable water test results to the Vermont Department of Health (DOH) as of January 1, 2013.

The Vermont DOH's goal is that this law will aid public health officials in developing a database for mapping areas identified as possible groundwater contamination locations. It does NOT require homeowners, buyers or sellers to perform residential testing, but WILL require Endyne, Inc. to submit results to the State should any testing be performed.

For more information on this legislation, please visit:

<http://www.leg.state.vt.us/docs/2012/Acts/ACT163.pdf>

http://healthvermont.gov/enviro/ph_lab/documents/drinking_water_testing_wells_factsheet.pdf

SAMPLING INSTRUCTIONS FOR RADON IN WATER KIT

1. Take the sample from any convenient cold water faucet. If the faucet has a strainer, it should be removed. Run the water at moderate force for 5-10 minutes before taking the sample.
2. Allow water to run into a clean, deep bowl or pan until overflowing.
3. With the water still running, raise the pan to completely submerge the faucet nozzle. (This is done in order to minimize agitation and subsequent loss of radon.) Allow the water to run in this configuration for at least 1 minute.
4. With the faucet still submerged, turn water off and carefully place the pan on a flat surface.
5. Holding the uncapped vial open-end down, carefully submerge it vertically into the pan of water. Slowly tilt the vial while under water so that it gradually becomes completely filled.
6. **WHILE STILL SUBMERGED**, carefully secure screw-on cap.
7. Lift the vial out of the water, turn upside down and check for air bubbles. If there are any bubbles in the container, submerge the vial again and uncap to allow more water in and recap.
8. Label sample container with the location and date/time of sampling.
9. Complete all requested information on the reverse side and return the sample and form to the laboratory **the SAME DAY of sampling**. If information is missing such as date and time of collection, the sample may not be accepted.

We can accept these samples Monday through Thursday only, 8:00am to 4:30pm. We cannot accept radon samples on Friday or the day before a holiday.